

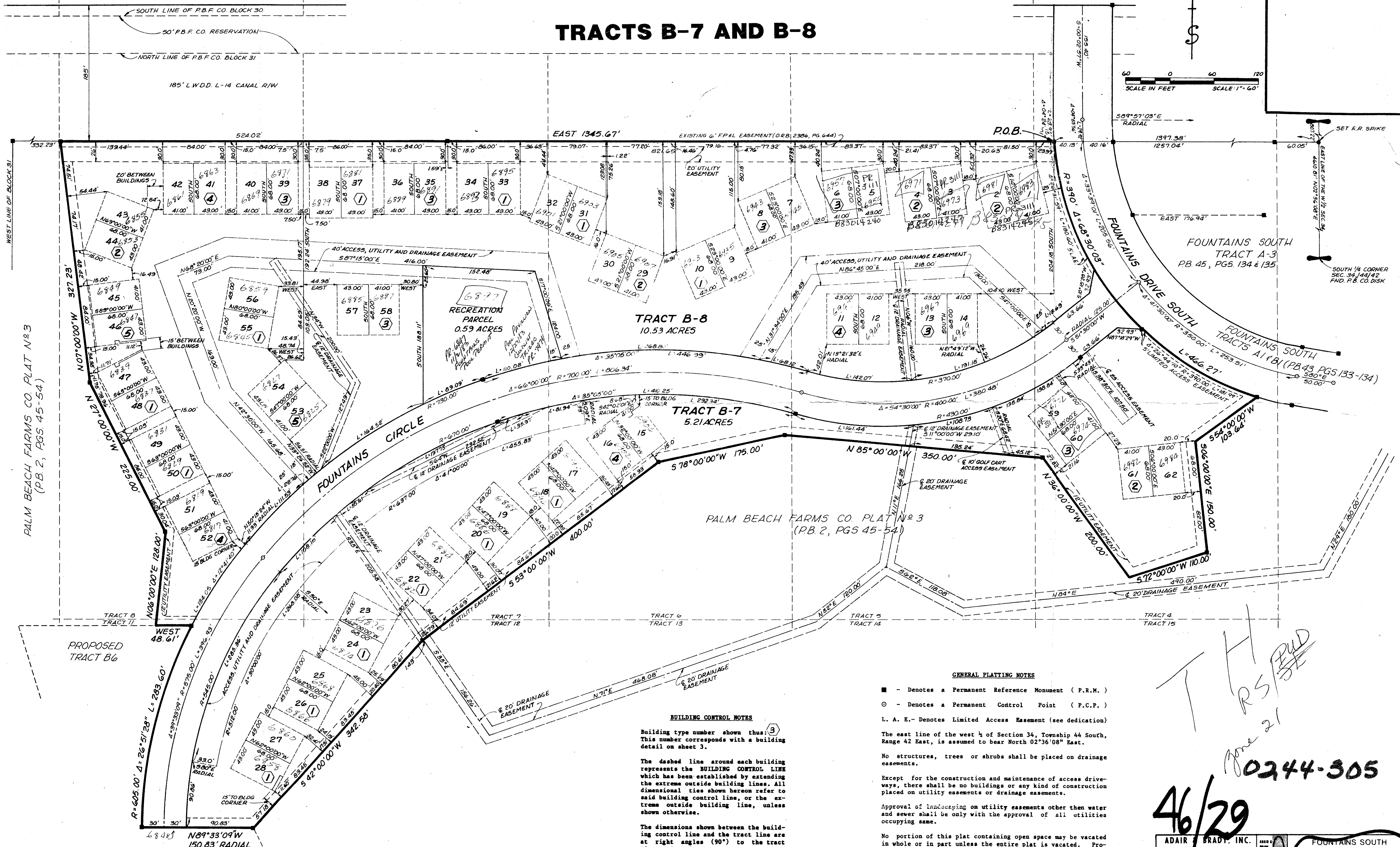
46/29

PALM BEACH GOLF CLUB ESTS. PLAT N° 5
PLAT BOOK 30, PGS. 193-196

Fountains South

29

TRACTS B-7 AND B-8



PALM BEACH FARMS CO. PLAT N° 3
(P.B. 2, PGS. 45-54)



BUILDING CONTROL NOTES

Building type number shown thus: ③
This number corresponds with a building detail on sheet 3.

The dashed line around each building represents the BUILDING CONTROL LINE which has been established by extending the extreme outside building lines. All dimensional ties shown hereon refer to said building control line, or the extreme outside building line, unless shown otherwise.

The dimensions shown between the building control line and the tract line are at right angles (90°) to the tract line. Dimensions shown between building control lines are at right angles (90°) to the building as delineated. All exterior building walls are at right angles (90°).

GENERAL PLATTING NOTES

■ - Denotes a Permanent Reference Monument (P.R.M.)
 ○ - Denotes a Permanent Control Point (P.C.P.)
 L. A. E. - Denotes Limited Access Easement (see dedication)

The east line of the west 1/4 of Section 34, Township 44 South, Range 42 East, is assumed to bear North 02°36'08" East.

No structures, trees or shrubs shall be placed on drainage easements.

Except for the construction and maintenance of access drive-ways, there shall be no buildings or any kind of construction placed on utility easements or drainage easements.

Approval of landscaping on utility easements other than water and sewer shall be only with the approval of all utilities occupying same.

No portion of this plat containing open space may be vacated in whole or in part unless the entire plat is vacated. Provided however, portions of this plat containing open space may be vacated if the effect of such vacation would not reduce the total open space of the planned unit development below the requirements of section 500.21 of the Palm Beach County Zoning Code.

Handwritten notes:
 T H
 R S
 June 21
 0244-305
 46/29

ADAIR BRADY, INC. CONSULTING ENGINEERS & LAND SURVEYORS		WEST PALM BEACH		FOUNTAINS SOUTH TRACTS B7 AND B8 RECORD PLAT	
Dr. MBL	Scale 1"=60'	FP 823	SHEET		
Ck. d.p.	Date JUNE, 1983	2 OF 3			
Ap. JA	Job No. 9562Q				